

A new concept in assay quantification

RapidAssays presents the

RLQ system

(ReaderLess Quantification)

[Click on this window to download the presentation \(PDF\)](#)

The **RLQ** system uses your flat bead scanner to quantify and document your result, so there is no need to purchase a reader.

RLQ is net based so there is no need to purchase or install software.

The **RLQ** system uses your flat bead scanner to quantify and document your result, so there is no need to purchase a reader.

RLQ is net based so there is no need to purchase or install software.

Most importantly the

RLQ System

is FREE

for gRAD users

Most importantly the

RLQ System

is FREE

for gRAD users

There are three important steps when using the

RLQ system

Step 1: Calibrate

carried out when setting up a new assay on your system

Step 2: Quantify

the day to day running of samples

Step 3: Calibration card production

Allows others to calibrate their system for your assay

There are three important steps when using the

RLQ system

Step 1: Calibrate

carried out when setting up a new assay on your system

Step 2: Quantify

the day to day running of samples

Step 3: Calibration card production

Allows others to calibrate their system for your assay

There are three important steps when using the

RLQ system

Step 1: Calibrate

carried out when setting up a new assay on your system

Step 2: Quantify

the day to day running of samples

Step 3: Calibration card production

Allows others to calibrate their system for your assay

There are three important steps when using the

RLQ system

Step 1: Calibrate

Is carried when setting up a new assay on your system

Step 2: Quantify

For the day to day running of samples

Step 3: Calibration card production

Allows others to calibrate their system for your assay

Step 1: Calibrate

As not all scanner and other imaging systems are not the same you must first calibrate the system to a new assay.

Calibration can be carried out with samples of known analyte concentrations.

or with a calibration card with assigned analyte concentrations.

Step 1: Calibrate

As not all scanner and other imaging in systems are not the same you must first calibrate the system to a new assay.

Calibration can be carried out with samples of know analyte concentrations.

or with a calibration card with assigned analyte concentrations.

Step 1: Calibrate

As not all scanner and other imaging systems are not the same you must first calibrate the system to a new assay.

Calibration can be carried out with samples of know analyte concentrations.

or with a calibration card with assigned analyte concentrations.

Step 1: Calibrate

As not all scanner and other imaging systems are not the same you must first calibrate the system to a new assay.

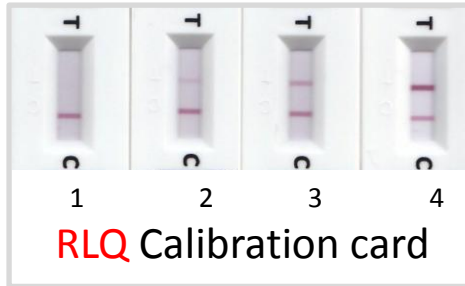
Calibration can be carried out with samples of know analyte concentrations.

or with a calibration card with assigned analyte concentrations.

CALIBRATION

Obtain the image

- with samples of known analyte concentration
- supplied Calibration card



CALIBRATION

Open the Homepage

Select the Test code (gRAD or assay batch number)

The other information is then automatically input

Select the calibration image file

Manufacturer: RapidAssays Test Code: GI02231-1

Your comment here

#	Analyte	Color	Calculation Tye	Function
1	Enter analyte name	Green	T	Piecewise linear
2				
3				
4				
5				
6				

#	Image	Analyte	Conc	Test	Bkg	Ctrl	Final	Status
1								Skipped
2								Skipped
3								Skipped
4								Skipped
5								Skipped
6								Skipped
7								Skipped
8								Skipped
9								Skipped
10								Skipped
11								Skipped
12								Skipped
13								Skipped
14								Skipped
15								Skipped
16								Skipped

Image/Graph

Calibration impossible: not enough data samples for some of the Analytes

Ver: 01-07-2010

Calibrate

Save calibration

Snapshot

CALIBRATION

Open the Homepage

Select the Test code (gRAD or assay batch number)

The other information is then automatically input

Select the calibration image file

Manufacturer: RapidAssays

Test Code: **GI02231-1**

Your comment here

#	Analyte	Color	Calculation Typ	Function
1	Enter analyte name	Green	T	Piecewise linear
2				
3				
4				
5				
6				

#	Image	Analyte	Conc	Test	Bkg	Ctrl	Final	Status
1								Skipped
2								Skipped
3								Skipped
4								Skipped
5								Skipped
6								Skipped
7								Skipped
8								Skipped
9								Skipped
10								Skipped
11								Skipped
12								Skipped
13								Skipped
14								Skipped
15								Skipped
16								Skipped

Calibration impossible: not enough data samples for some of the Analytes

Ver: 01-07-2010

Calibrate Save calibration Snapshot

CALIBRATION

Open the Homepage

Select the Test code (gRAD or assay batch number)

The other information is then automatically input

Select the calibration card image file

Manufacturer: RapidAssays Test Code: GI02231-1

Your comment here

#	Analyte	Color	Calculation Tye	Function
1	Enter analyte name	Green	T	Piecewise linear
2				
3				
4				
5				
6				

#	Image	Analyte	Conc	Test	Bkg	Ctrl	Final	Status
1								Skipped
2								Skipped
3								Skipped
4								Skipped
5								Skipped
6								Skipped
7								Skipped
8								Skipped
9								Skipped
10								Skipped
11								Skipped
12								Skipped
13								Skipped
14								Skipped
15								Skipped
16								Skipped

Image/Graph

Calibration impossible: not enough data samples for some of the Analytes

Ver: 01-07-2010

Calibrate Save calibration Snapshot

CALIBRATION

Open the Homepage

Select the Test code (gRAD or assay batch number)

The other information is then automatically input

Select the calibration card image file

Manufacturer: RapidAssays Test Code: GI02231-1

Your comment here

#	Analyte	Color	Calculation Tye	Function
1	Enter analyte name	Green	T	Piecewise linear
2				
3				
4				
5				
6				

#	Image	Analyte	Conc	Test	Bkg	Ctrl	Final	Status
1								Skipped
2								Skipped
3								Skipped
4								Skipped
5								Skipped
6								Skipped
7								Skipped
8								Skipped
9								Skipped
10								Skipped
11								Skipped
12								Skipped
13								Skipped
14								Skipped
15								Skipped
16								Skipped

Image/Graph

Calibration impossible: not enough data samples for some of the Analytes

Ver: 01-07-2010

Calibrate Save calibration Snapshot

CALIBRATION

The software automatically finds the individual gRADs and quantifies the Test and Control lines and the background

Enter the known or assigned analyte concentration for each gRAD

Press Calibrate

Manufacturer:

Test Code:

#	Analyte	Color	Calculation Ty	Function
1	Your Test	Green	(B-T)/(B-C)	Piecewise linear
2				
3				
4				
5				
6				

#	Image	Analyte	Conc	Test	Blg	Ctrl	Final	Status
1	Calibration card png	Your Test	0	191	190	121	-0.014	OK
2	Calibration card png	Your Test	10	179	194	119	0.2	OK
3	Calibration card png	Your Test	30	162	193	123	0.5857	OK
4	Calibration card png	Your Test	100	93	213	148	1.8461	OK
5								Skipped
6								Skipped
7								Skipped
8								Skipped
9								Skipped
10								Skipped
11								Skipped
12								Skipped
13								Skipped
14								Skipped
15								Skipped
16								Skipped

Image/Graph

Ver. 01-07-2010

CALIBRATION


The software automatically finds the individual gRADs and quantifies the Test and Control lines and the background

Enter the known or assigned analyte concentration for each gRAD
Press Calibrate

Manufacturer: RapidAssays Test Code: GH02231-1 Image/Graph

#	Analyte	Color	Calculation Ty	Function
1	Your Test	Green	(B-T)/(B-C)	Piecewise linear
2				
3				
4				
5				
6				

#	Image	Analyte	Conc	Test	Big	Ctrl	Final	Status
1	Calibration card png	Your Test	0	191	190	121	-0.014	OK
2	Calibration card png	Your Test	10	179	194	119	0.2	OK
3	Calibration card png	Your Test	30	172	193	123	0.5857	OK
4	Calibration card png	Your Test	100	158	213	148	1.8481	OK
5								Skipped
6								Skipped
7								Skipped
8								Skipped
9								Skipped
10								Skipped
11								Skipped
12								Skipped
13								Skipped
14								Skipped
15								Skipped
16								Skipped



1 2 3 4
RLQ Calibration card

Ver. 01-07-2010

Calibrate Save calibration Snapshot

CALIBRATION

The software automatically finds the individual gRADs and quantifies the Test and Control lines and the background
Enter the known or assigned analyte concentration for each gRAD
Press Calibrate

Manufacturer: RapidAssays Test Code: GH02231-1 Image/Graph

#	Analyte	Color	Calculation Ty	Function
1	Your Test	Green	(B-T)/(B-C)	Piecewise linear
2				
3				
4				
5				
6				

#	Image	Analyte	Conc	Test	Blg	Ctrl	Final	Status
1	Calibration card png	Your Test	0	191	190	121	-0.014	OK
2	Calibration card png	Your Test	10	179	194	119	0.2	OK
3	Calibration card png	Your Test	30	162	193	123	0.5857	OK
4	Calibration card png	Your Test	100	93	213	148	1.8461	OK
5								Skipped
6								Skipped
7								Skipped
8								Skipped
9								Skipped
10								Skipped
11								Skipped
12								Skipped
13								Skipped
14								Skipped
15								Skipped
16								Skipped

1 2 3 4
RLQ Calibration card

CALIBRATION

the image processing or calibration curve setting can be adjusted for the specific assay

Save the optimized calibration file on your computer

Manufacturer: RapidAssays | Test Code: GH02231-1

#	Analyte	Color	Calculation Typ	Function
1	Your Test	Green	(B-T)/(B-C)	Piecewise linear
2				
3				
4				
5				
6				

#	Image	Analyte	Conc	Test	Bkg	Ctrl	Final	Status
1	Calibration card.png	Your Test	0	191	190	121	-0.014	OK
2	Calibration card.png	Your Test	10	179	194	119	0.2	OK
3	Calibration card.png	Your Test	30	152	193	123	0.5867	OK
4	Calibration card.png	Your Test	100	93	213	148	1.8461	OK
5								Skipped
6								Skipped
7								Skipped
8								Skipped
9								Skipped
10								Skipped
11								Skipped
12								Skipped
13								Skipped
14								Skipped
15								Skipped
16								Skipped

Image/Graph: Final response vs Conc (x10⁻²)
Fit: Piecewise linear (R²: 1.0000)

Calibration impossible: already complete
Ver: 01-07-2010

Calibrate | **Save calibration** | Snapshot

CALIBRATION

the image processing or calibration curve setting can be adjusted for the specific assay.

Save the optimized calibration file on your computer

Manufacturer: RapidAssays | Test Code: GH02231-1

#	Analyte	Color	Calculation Typ	Function
1	Your Test	Green	(B-T)/(B-C)	Piecewise linear
2				
3				
4				
5				
6				

#	Image	Analyte	Conc	Test	Bkg	Ctrl	Final	Status
1	Calibration card.png	Your Test	0	191	190	121	-0.014	OK
2	Calibration card.png	Your Test	10	179	194	119	0.2	OK
3	Calibration card.png	Your Test	30	152	193	123	0.5867	OK
4	Calibration card.png	Your Test	100	93	213	148	1.8461	OK
5								Skipped
6								Skipped
7								Skipped
8								Skipped
9								Skipped
10								Skipped
11								Skipped
12								Skipped
13								Skipped
14								Skipped
15								Skipped
16								Skipped

Image/Graph: Piecewise linear (R²: 1.0000)

Calibration impossible: already complete
Ver: 01-07-2010

Calibrate | **Save calibration** | Snapshot

Using the RLQ system

Step 2: Quantify

Scan the run gRADs

Open the homepage and select the calibration file

Upload the image and the RLQ system automatically finds the gRADs giving a resultant concentration

The results are saved as an image or text file

Using the RLQ system

Step 2: Quantify

Scan the run gRADs

Open the homepage and select the calibration file

Upload the image and the RLQ system automatically finds the gRADs giving a resultant concentration

The results are saved as an image or text file

Using the RLQ system

Step 2: Quantify

Scan the run gRADs

Open the homepage and select the calibration file

Upload the image and the RLQ system automatically finds the gRADs giving a resultant concentration

The results are saved as an image or text file

Using the RLQ system

Step 2: Quantify

Scan the run gRADs

Open the homepage and select the calibration file

Upload the image and the RLQ system automatically finds the gRADs giving a resultant concentration

The results are saved as an image or text file

Using the RLQ system

Step 2: Quantify

Scan the run gRADs

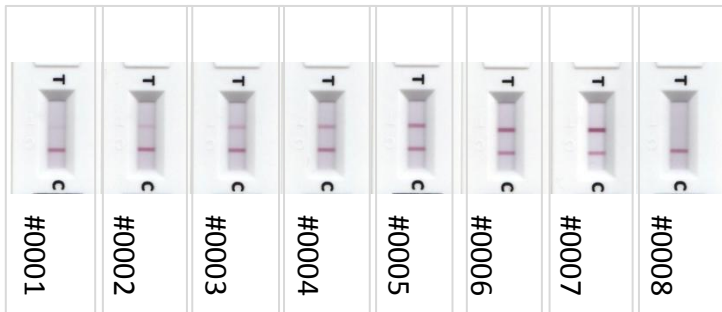
Open the homepage and select the calibration file

Upload the image and the RLQ system automatically finds the gRADs giving a resultant concentration

The results are saved as an image or text file

Quantification

Run gRADs and Scan



Day to day analysis

Quantification

- Open the quantification page and select the calibration file
- Select the Image and the home page will scan for gRADs
- Select the analyte for each of the gRAD found
- The assays are automatically quantified and displayed

Calibration
_0002_your test calibration

Your comment here

#	Analyte	Color	Calculation Type	Function
1	Your Test	Green	(B-T)/(B-C)	Piecewise linear
2				
3				
4				
5				
6				

#	Image	Analyte	Test	Big	Ctr	Final	Conc	Status
1	Your Test run.png	Your Test	192	196	123	0.0047	3.12	OK
2	Your Test run.png	Your Test	179	194	119	0.2	10.16	OK
3	Your Test run.png	Your Test	168	194	121	0.3561	17.97	OK
4	Your Test run.png	Your Test	152	193	123	0.5857	29.69	OK
5	Your Test run.png	Your Test	130	198	131	1.0149	53.91	OK
6	Your Test run.png	Your Test	107	199	134	1.4153	76.56	OK
7	Your Test run.png	Your Test	92	213	149	1.8906	>100	OK
8	Your Test run.png	Your Test	191	191	121	0	0.78	OK
9								Skipped
10								Skipped
11								Skipped
12								Skipped
13								Skipped
14								Skipped
15								Skipped
16								Skipped

Image

#0001 #0002 #0003 #0004 #0005 #0006 #0007 #0008

Quantification

Open the quantification page and select the calibration file
Select the Image and the home page will scan for gRADs
Select the analyte for each of the gRAD found
The assays are automatically quantified and displayed

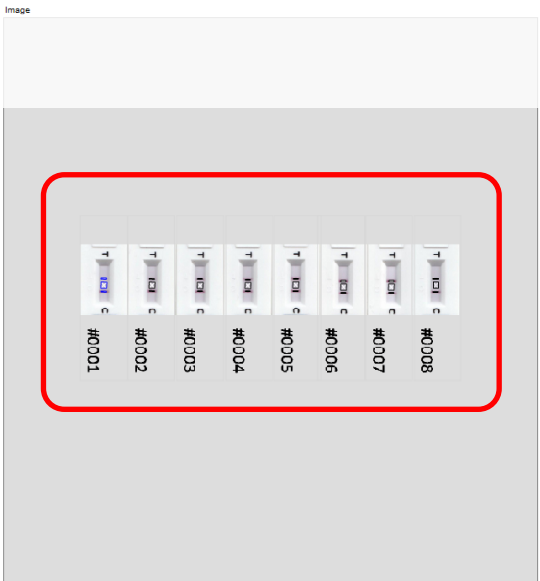
Calibration

0002_your test calibration

Your comment here

#	Analyte	Color	Calculation Ty	Function
1	Your Test	Green	(B-T)/(B-C)	Piecewise linear
2				
3				
4				
5				
6				

#	Image	Analyte	Test	Big	Ctl	Final	Conc	Status
1	Your Test run.png	Your Test	192	196	123	0.0547	3.12	OK
2	Your Test run.png	Your Test	179	194	119	0.2	10.16	OK
3	Your Test run.png	Your Test	168	194	121	0.3561	17.97	OK
4	Your Test run.png	Your Test	152	193	123	0.5557	29.69	OK
5	Your Test run.png	Your Test	130	198	131	1.0149	53.91	OK
6	Your Test run.png	Your Test	107	199	134	1.4153	76.56	OK
7	Your Test run.png	Your Test	92	213	149	1.8906	>100	OK
8	Your Test run.png	Your Test	191	191	121	0	0.78	OK
9								Skipped
10								Skipped
11								Skipped
12								Skipped
13								Skipped
14								Skipped
15								Skipped
16								Skipped



Quantification

Open the quantification page and select the calibration file
Select the Image and the home page will scan for gRADs
Select the analyte for each of the gRAD found
The assays are automatically quantified and displayed

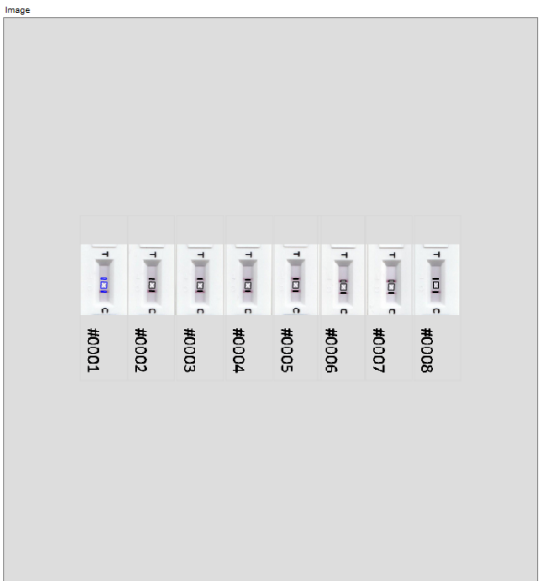
Calibration

...0002...your test calibration

Your comment here

#	Analyte	Color	Calculation Ty	Function
1	Your Test	Green	(B-T)/(B-C)	Piecewise linear
2				
3				
4				
5				
6				

#	Image	Analyte	Test	Big	Ctl	Final	Conc	Status
1	Your Test run.png	Your Test	192	196	123	0.0547	3.12	OK
2	Your Test run.png	Your Test	179	194	119	0.2	10.16	OK
3	Your Test run.png	Your Test	168	194	121	0.3561	17.97	OK
4	Your Test run.png	Your Test	152	193	123	0.5557	29.69	OK
5	Your Test run.png	Your Test	130	198	131	1.0149	53.91	OK
6	Your Test run.png	Your Test	107	199	134	1.4153	76.56	OK
7	Your Test run.png	Your Test	92	213	149	1.8906	>100	OK
8	Your Test run.png	Your Test	191	191	121	0	0.78	OK
9								Skipped
10								Skipped
11								Skipped
12								Skipped
13								Skipped
14								Skipped
15								Skipped
16								Skipped



Quantification

Open the quantification page and select the calibration file
Select the Image and the home page will scan for gRADs
Select the analyte for each of the gRAD found
The assays are automatically quantified and displayed

Calibration

__0002__your test calibration

Your comment here

#	Analyte	Color	Calculation Ty	Function
1	Your Test	Green	(B-T)/(B-C)	Piecewise linear
2				
3				
4				
5				
6				

#	Image	Analyte	Test	Big	Ctl	Final	Conc	Status
1	Your Test run.png	Your Test	192	190	123	0.05	3.12	OK
2	Your Test run.png	Your Test	179	194	119	0.2	10.16	OK
3	Your Test run.png	Your Test	168	194	121	0.35	17.97	OK
4	Your Test run.png	Your Test	152	193	123	0.55	29.69	OK
5	Your Test run.png	Your Test	130	198	131	1.01	53.91	OK
6	Your Test run.png	Your Test	107	199	134	1.41	76.66	OK
7	Your Test run.png	Your Test	92	213	149	1.83	>100	OK
8	Your Test run.png	Your Test	191	191	121	0	0.78	OK
9								Skipped
10								Skipped
11								Skipped
12								Skipped
13								Skipped
14								Skipped
15								Skipped
16								Skipped



Quantification

The results can be saved as an image or as a text file

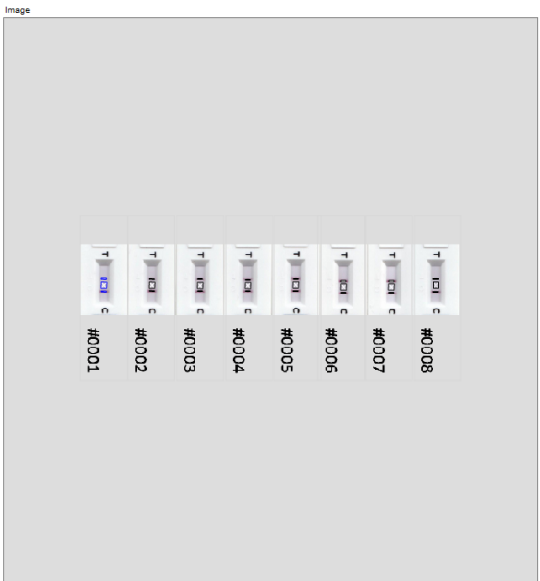
Calibration

__0002__your test calibration

Your comment here

#	Analyte	Color	Calculation Ty	Function
1	Your Test	Green	(B-T)/(B-C)	Piecewise linear
2				
3				
4				
5				
6				

#	Image	Analyte	Test	Big	Ctl	Final	Conc	Status
1	Your Test run.png	Your Test	192	196	123	0.0547	3.12	OK
2	Your Test run.png	Your Test	179	194	119	0.2	10.16	OK
3	Your Test run.png	Your Test	168	194	121	0.3561	17.97	OK
4	Your Test run.png	Your Test	152	193	123	0.5857	29.69	OK
5	Your Test run.png	Your Test	130	198	131	1.0149	53.91	OK
6	Your Test run.png	Your Test	107	199	134	1.4153	76.56	OK
7	Your Test run.png	Your Test	92	213	149	1.8906	>100	OK
8	Your Test run.png	Your Test	191	191	121	0	0.78	OK
9								Skipped
10								Skipped
11								Skipped
12								Skipped
13								Skipped
14								Skipped
15								Skipped
16								Skipped



Quantification

The results can be saved as an image
or as a text file

Calibration

__0002__your test calibration

Your comment here

#	Analyte	Color	Calculation Ty	Function
1	Your Test	Green	(B-T)/(B-C)	Piecewise linear
2				
3				
4				
5				
6				

#	Image	Analyte	Test	Big	Ctl	Final	Conc	Status
1	Your Test run.png	Your Test	192	196	123	0.0547	3.12	OK
2	Your Test run.png	Your Test	179	194	119	0.2	10.16	OK
3	Your Test run.png	Your Test	168	194	121	0.3561	17.97	OK
4	Your Test run.png	Your Test	152	193	123	0.5857	29.69	OK
5	Your Test run.png	Your Test	130	198	131	1.0149	53.91	OK
6	Your Test run.png	Your Test	107	199	134	1.4153	76.56	OK
7	Your Test run.png	Your Test	92	213	149	1.8906	>100	OK
8	Your Test run.png	Your Test	191	191	121	0	0.78	OK
9								Skipped
10								Skipped
11								Skipped
12								Skipped
13								Skipped
14								Skipped
15								Skipped
16								Skipped

